

Business Opportunities in Production of

Chocolate & Confectionery

**(Milk Chocolate, Dark Chocolate, White Chocolate, Orange & Tangy
Flavour Toffee, Citric Flavoured Candies & Chocolate Wafers)**

Chocolate confectionery includes any solid or semi-solid food primarily made of chocolate or cocoa with or without the inclusion of fruits or nuts, as well as food made by wrapping, coating, or encasing sugar confectionery in chocolate, but excludes fried, filled, or flavoured with chocolate biscuits, chocolate ice cream, and baked chocolate confectionery.



The chocolate and confectionery products industry has always experienced major demand fluctuations. Chocolate goods are typically seasonal in nature, with demand peaking during the holidays. Chocolate and confectionery items appeal to people of all ages because of their appealing look and colour.



Moreover, a number of market developments have had an influence. Varieties of products have gained popularity in recent years as a result of their delicious taste and longer shelf life. Chocolate is used in a variety of foods, including milkshakes, candy bars, cookies, and cereals.



Chocolate is a commodity that necessitates a number of steps to manufacture. Harvesting coca, grinding coca into cocoa beans, and shipping the cocoa beans to the manufacturing facility are all part of the operation.



Benefits Chocolate Confectionery

The more advantages there are, the higher the cocoa content, as in dark chocolate. Dark chocolate can also contain less fat and sugar, but read the label carefully. The following are some of the advantages of eating chocolate:



- 1. Decreased cholesterol levels**
- 2. Guarding against cognitive loss**
- 3. Lowering the risk of heart disease and stroke**

Chocolate is sold in the form of chocolate bars, which are available in dark, milk, and white chocolate variants.



Other ingredients, such as almonds, raisins, or crisped rice, are mixed into chocolate bars that are mainly chocolate. Chocolate is used in a wide range of bars, which usually include a number of confectionary ingredients (such as nougat, wafers, caramel, nuts, and so on).



Market Outlook

In 2016, the global chocolate confectionery market was worth USD 123.7 billion, and it is projected to expand at a CAGR of 2.5 percent over the next five years. The global chocolate confectionery market will benefit from the decrease in cocoa bean prices.



Furthermore, chocolate confectionery manufacturers engage in a variety of marketing and promotional campaigns to raise product awareness within their target end-user groups. The Global Chocolate Confectionery Industry weighs the competitive environment and the excellent market using the most successful of both primary and secondary research.



The lifestyles, tastes, and desires of consumers are constantly changing. This has resulted in confectionery innovation, which is driving market growth. The confectionery industry is one of the fastest growing in the world. Confections are usually low in nutrients and high in calories.



Key Players

1. Ambriona Cacao Blends Pvt. Ltd.

2. Candico (I) Ltd.

3. Cocoa Products & Beverages Ltd.

4. Dugar Overseas Pvt. Ltd.

5. Dukes Consumer Care Ltd.

6. Gandour India Food Processing Pvt. Ltd.

7. Global Consumer Products Pvt. Ltd.

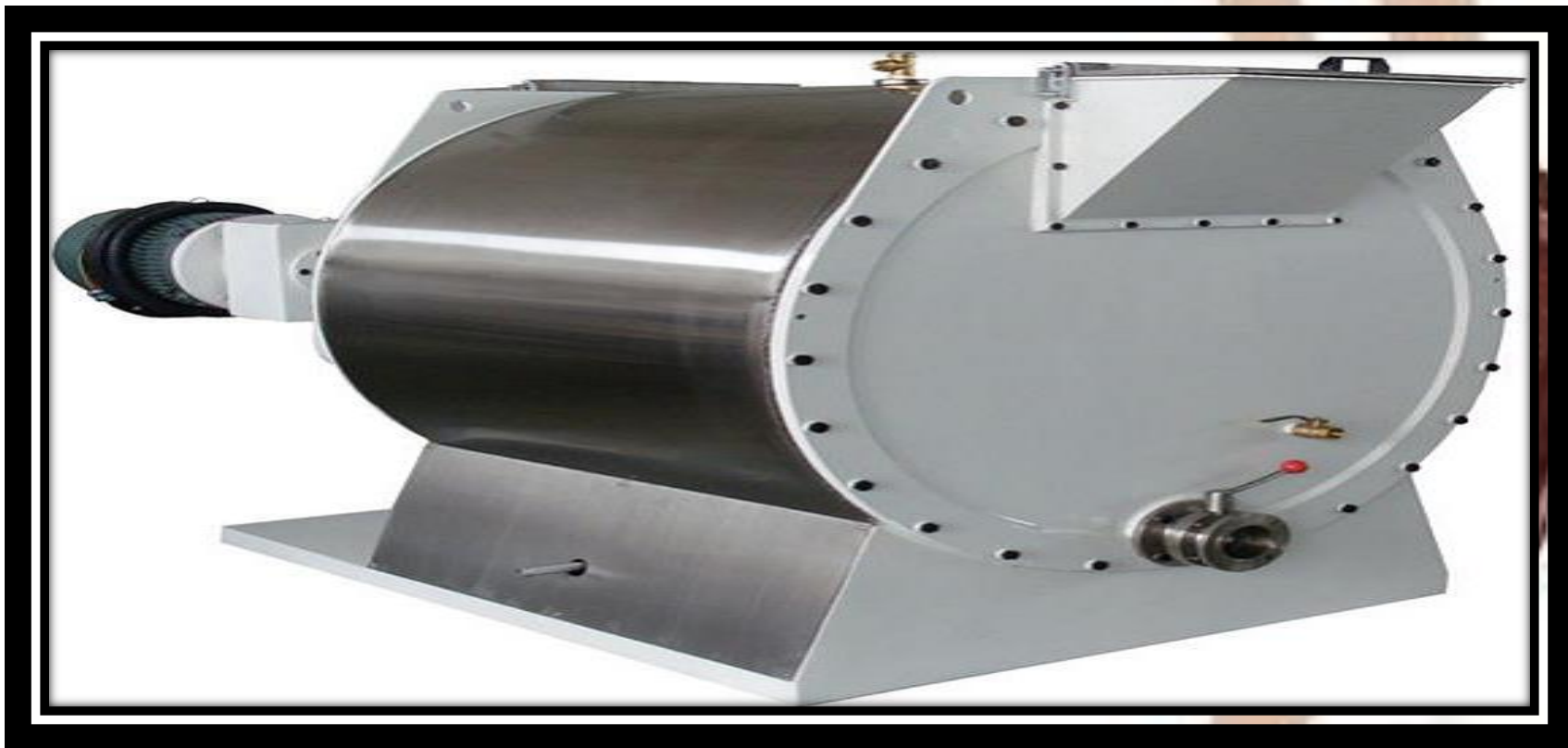
8. Inbisco India Pvt. Ltd.

9. Joyco India Pvt. Ltd.

Machinery Photographs



Chocolate Tempering Machine



Chocolate Refiner/Conche



Chocolate Storage Tank

The background of the slide is a close-up photograph of a hand holding a thick stack of Indian Rupee banknotes. The focus is on the texture of the paper and the embossed patterns on the notes, with a warm, golden-brown color palette. The text 'Project at a Glance' is overlaid in the center in a large, bold, red font with a white outline and a reflection effect.

Project at a Glance

COST OF PROJECT				MEANS OF FINANCE			
Particulars	Existing	Proposed	Total	Particulars	Existing	Proposed	Total
Land & Site Development Exp.	0.00	60.00	60.00	Capital	0.00	167.81	167.81
Buildings	0.00	149.30	149.30	Share Premium	0.00	0.00	0.00
Plant & Machineries	0.00	249.80	249.80	Other Type Share Capital	0.00	0.00	0.00
Motor Vehicles	0.00	12.00	12.00	Reserves & Surplus	0.00	0.00	0.00
Office Automation Equipments	0.00	32.50	32.50	Cash Subsidy	0.00	0.00	0.00
Technical Knowhow Fees & Exp.	0.00	20.00	20.00	Internal Cash Accruals	0.00	0.00	0.00
Franchise & Other Deposits	0.00	0.00	0.00	Long/Medium Term Borrowings	0.00	503.44	503.44
Preliminary & Pre-operative Exp	0.00	5.00	5.00	Debentures / Bonds	0.00	0.00	0.00
Provision for Contingencies	0.00	23.50	23.50	Unsecured Loans/Deposits	0.00	0.00	0.00
Margin Money - Working Capital	0.00	119.16	119.16				
TOTAL	0.00	671.26	671.26	TOTAL	0.00	671.26	671.26

Year	Annualised		Book Value	Debt	Dividend	Retained Earnings		Payout	Probable Market Price	P/E Ratio	Yield Price/ Book Value
	EPS	CEPS				Per Share	Per Share				
						%		%			%
1-2	6.18	9.92	16.18	24.00	0.00	100.00	6.18	0.00	6.18	1.00	0.00
2-3	8.93	12.19	25.11	18.00	0.00	100.00	8.93	0.00	8.93	1.00	0.00
3-4	11.67	14.51	36.78	12.00	0.00	100.00	11.67	0.00	11.67	1.00	0.00
4-5	14.34	16.81	51.12	6.00	0.00	100.00	14.34	0.00	14.34	1.00	0.00
5-6	16.90	19.06	68.01	0.00	0.00	100.00	16.90	0.00	16.90	1.00	0.00

Year	D. S. C. R.			Debt / - Deposits Debt	Equity as- Equity	Total Net Worth	Return on Net Worth	Profitability Ratio					Assets Turnover Ratio	Curren t Ratio
	Individual	Cumulative	Overall					GPM	PBT	PAT	Net Contri bution	P/V Ratio		
	(Number of times)			(Number of times)		%	%	%	%	%	%			
Initial				3.00	3.00									
1-2	1.45	1.45		1.48	1.48	3.16		9.21%	5.49%	3.85%	777.64	28.88%	2.42	1.15
2-3	1.76	1.60		0.72	0.72	1.97		10.40%	7.24%	4.77%	730.42	23.25%	2.54	1.30
3-4	2.12	1.76	2.12	0.33	0.33	1.30		11.20%	8.48%	5.46%	830.56	23.13%	2.55	1.47
4-5	2.55	1.93		0.12	0.12	0.91		11.73%	9.36%	5.96%	930.69	23.04%	2.49	1.66
5-6	3.05	2.12		0.00	0.00	0.66		12.08%	9.99%	6.32%	1030.83	22.97%	2.38	2.11

BEP

BEP - Maximum Utilisation Year	5
Cash BEP (% of Installed Capacity)	50.15%
Total BEP (% of Installed Capacity)	53.67%

IRR, PAYBACK and FACR

Internal Rate of Return .. (In %age)	28.78%
Payback Period of the Project is (In Years)	2 Years 3 Months
Fixed Assets Coverage Ratio (No. of times)	14.180

1. What is Chocolate Confectionery Plant Manufacturing industry ?

2. How has the Chocolate Confectionery Plant Manufacturing industry performed so far and how will it perform in the coming years ?

3. What is the Project Feasibility of Chocolate Confectionery Plant Manufacturing Plant ?

4. What are the requirements of Working Capital for setting up Chocolate Confectionery Plant Manufacturing plant ?

5. What is the structure of the Chocolate Confectionery Plant Manufacturing Business and who are the key/major players ?

6. What is the total project cost for setting up Chocolate Confectionery Plant Manufacturing Business?

7. What are the operating costs for setting up Chocolate Confectionery Plant Manufacturing plant ?

8. What are the machinery and equipment requirements for setting up Chocolate Confectionery Plant Manufacturing plant ?

9. Who are the Suppliers and Manufacturers of Plant & Machinery for setting up Chocolate Confectionery Plant Manufacturing plant ?

10. What are the requirements of raw material for setting up Chocolate Confectionery Plant Manufacturing plant ?

11. Who are the Suppliers and Manufacturers of Raw materials for setting up Chocolate Confectionery Plant Manufacturing Business?

12. What is the Manufacturing Process of Chocolate Confectionery Plant?

13. What is the total size of land required for setting up Chocolate Confectionery Plant Manufacturing plant ?

14. What will be the income and expenditures for Chocolate Confectionery Plant Manufacturing Business?

15. What are the Projected Balance Sheets of Chocolate Confectionery Plant Manufacturing plant ?

16. What are the requirement of utilities and overheads for setting up Chocolate Confectionery Plant Manufacturing plant?

17. What is the Built up Area Requirement and cost for setting up Chocolate Confectionery Plant Manufacturing Business?

18. What are the Personnel (Manpower) Requirements for setting up Chocolate Confectionery Plant Manufacturing Business?

19. What are Statistics of Import & Export for Chocolate Confectionery Plant?

20. What is the time required to break-even of Chocolate Confectionery Plant Manufacturing Business?

21. What is the Break-Even Analysis of Chocolate Confectionery Plant Manufacturing plant?

22. What are the Project financials of Chocolate Confectionery Plant Manufacturing Business?

23. What are the Profitability Ratios of Chocolate Confectionery Plant Manufacturing Project?

24. What is the Sensitivity Analysis-Price/Volume of Chocolate Confectionery Plant Manufacturing plant?

25. What are the Projected Pay-Back Period and IRR of Chocolate Confectionery Plant Manufacturing plant?

26. What is the Process Flow Sheet Diagram Of Chocolate Confectionery Plant Manufacturing project?

27. What are the Market Opportunities for setting up Chocolate Confectionery Plant Manufacturing plant?

28. What is the Market Study and Assessment for setting up Chocolate Confectionery Plant Manufacturing Business?

29. What is the Plant Layout for setting up Chocolate Confectionery Plant Manufacturing Business?

The background of the slide is a photograph of several large, brown chocolate Easter eggs with a textured surface. In the foreground, there are several smaller, colorful (pink, yellow, white) chocolate eggs, some of which are cracked open, revealing a hollow interior. The scene is set against a light, possibly white, background.

Table of Contents of the Project Report

1. PROJECT LOCATION

- **DISTRICT PROFILE & GEOTECHNICAL CHARACTERIZATION SITE**
- *General*
- *Physical Characteristics*
- *Map*
- *Culture & Languages*
- *Climate & Rainfall*
- *Transportation and Communications*
- *Forest*
- *Economy & Industry*

2. INTRODUCTION



3. HISTORY OF PRODUCTS

4. COMPOSITION OF PRODUCTS

- **CHOCOLATE**
- **CANDY**
- **TOFFEE**

5. TYPES OF PRODUCT

- **CHOCOLATE**
- **CANDY AND TOFFEE**
- **CHOCOLATE WAFERS**

6. USES OF PRODUCTS

7. HEALTH BENEFIT OF PRODUCTS

- **CHOCOLATES**
- **CANDY & TOFFEE**
- **CHOCOLATE WAFERS**

8. B.I.S. SPECIFICATIONS

- **IS 1163 (1992): CHOCOLATES [FAD 6: STIMULANT FOODS]**
- **IS 11730 (1986): GLOSSARY OF TERMS FOR COCOA, CHOCOLATE AND ITS PRODUCTS [FAD 6: STIMULANT FOODS]**
- **IS 9095 (1979): Protein Chewy Candy [FAD 16: Food grains, Starches and Ready to Eat Foods]**

9. MARKET SURVEY

- **CHOCOLATE MARKET**
 - *Newly Emerging Indicators*
 - *Market Summary*
 - *Key Players*
 - *Chocolates-Demand: Past & Future*
 - *Market Structure*
 - *Product Variation*
 - *Lead Players*
 - *Leading Brands*

- **CONFECTIONERY MARKET**
 - *Newly Emerging Indicators*
 - *Current Scenario*
 - *Confectionery- Demand: Past & Future*
 - *Market Structure*
 - *Product Variation*
 - *Lead Players & Alliances*
 - *Leading Brands*
 - *Major Players in the Indian Confectionery Industry*
 - *Investment Trends*

- **CHOCOLATE WAFER MARKET**
- **COVID-19 WILL HAVE A POSITIVE IMPACT**
- **TOP LEADING MANUFACTURES**

10.EXPORT & IMPORT: ALL COUNTRIES

- **EXPORT: ALL COUNTRIES**
- **IMPORT: ALL COUNTRIES**

11.FINANCIALS & COMPARISON OF MAJOR INDIAN PLAYERS/COMPANIES

- **ABOUT FINANCIAL STATEMENTS OF CMIE DATABASE**
- **PROFITS & APPROPRIATIONS**

- **TOTAL LIABILITIES**
- **TOTAL ASSETS**
- **NET CASH FLOW FROM OPERATING ACTIVITIES**
- **SECTION – I**
 - *Name of Company with Contact Details*
 - *Name of Director(S)*
 - *Plant Capacity*
 - *Location of Plant*
 - *Name of Raw Material(S) Consumed with Quantity & Cost*

- **SECTION – II**
- **Assets**
- **Cash Flow**
- **Cost as %ge of Sales**
- **Growth in Assets & Liabilities**
- **Growth in Income & Expenditure**
- **Income & Expenditure**
- **Liabilities**
- **Liquidity Ratios**
- **Profitability Ratio**
- **Profits**
- **Return Ratios**
- **Structure of Assets & Liabilities (%)**

12.COMPANY PROFILE OF MAJOR PLAYERS

13.EXPORT & IMPORT STATISTICS OF INDIA

1.EXPORT STATISTICS ON CHOCOLATE

2.IMPORT STATISTICS ON CHOCOLATE

3.EXPORT STATISTICS ON CHOCOLATE WAFER

4.IMPORT STATISTICS ON CHOCOLATE WAFER

5.EXPORT STATISTICS ON TOFFEE & CANDY

6.IMPORT STATISTICS ON TOFFEE & CANDY

14.PRESENT MANUFACTURERS

15.COMPOSITION & DIFFERENT CONTENTS OF CHOCOLATES PRODUCTS

- **COMPOSITION OF PRODUCTS**
- **MINERAL ELEMENT CONTENT OF CHOCOLATE PRODUCTS**
- **AMINO ACID CONTENT OF CHOCOLATE PRODUCTS**
- **VITAMIN CONTENT OF CHOCOLATE PRODUCTS**
- **TOCOPHEROLS OF CHOCOLATE PRODUCTS**

16.NUTRITIONAL PROPERTIES OF CHOCOLATES PRODUCTS

- **WHITE CHOCOLATE**
- **DARK CHOCOLATE**
- **CHOCOLATE FLAVOR**
- **CHOCOLATE WAFERS**
- **ORANGE FLAVOR TOFFEE**
- **MANGO TANGY FLAVOR
TOFFEE**

17.FORMULATIONS OF PRODUCT

- **MILK CHOCOLATES**
- **COATING CHOCOLATE**
- **COUVERTURE CHOCOLATE**
- **DARK CHOCOLATES**
- **CHOCOLATE TOFFEE**
- **WHITE CHOCOLATE**
- **CITRIC FLAVOURED CANDIES**
- **ORANGE FLAVOR TOFFEE**
- **CHOCOLATE WAFERS**
- **CHOCOLATE CARAMELS**

18.CHOCOLATE MANUFACTURING PROCESS

19.PROCESS FLOW DIAGRAM

20.TOFFEE MANUFACTURING PROCESS

21.PROCESS FLOW DIAGRAM

22.CANDY MANUFACTURING PROCESS

23.PROCESS FLOW DIAGRAM

24.WAFERS MANUFACTURING PROCESS

- **RAW MATERIALS**
- **STEP BY STEP PROCESS**



25.PROCESS FLOW DIAGRAM

**26.SUPPLIERS OF PLANT &
MACHINERY**

**27.SUPPLIERS OF RAW
MATERIAL**

**28.PHOTOGRAPHS/IMAGES
FOR REFERENCE**

- **MACHINERIES FOR
CHOCOLATE PLANT**
- **RAW MATERIAL PHOTOGRAPHS**
- **PRODUCT PHOTOGRAPHS**

29.PLANT LAYOUT

Project Financials

- **Project at a Glance** **Annexure**
- **Assumptions for Profitability workings1**
- **Plant Economics.....2**
- **Production Schedule.....3**
- **Land & Building.....4**
 - Factory Land & Building**
 - Site Development Expenses**

- **Plant & Machinery.....5**
 - Indigenous Machineries**
 - Other Machineries (Miscellaneous, Laboratory etc.)**

- **Other Fixed Assets.....6**
 - Furniture & Fixtures**
 - Pre-operative and Preliminary Expenses**
 - Technical Knowhow**
 - Provision of Contingencies**

- **Working Capital Requirement Per Month.....7**
 - Raw Material**
 - Packing Material**
 - Lab & ETP Chemical Cost**
 - Consumable Store**

- **Overheads Required Per Month and Per Annum.....8**
 - Utilities & Overheads (Power, Water and Fuel Expenses etc.)**
 - Royalty and Other Charges**
 - Selling and Distribution Expenses**
- **Salary and Wages9**
- **Turnover Per Annum10**
- **Share Capital.....11**
 - Equity Capital**
 - Preference Share Capital**

□ Annexure 1 :: Cost of Project and Means of Finance

□ Annexure 2 :: Profitability and Net Cash Accruals

- Revenue/Income/Realisation**
- Expenses/Cost of Products/Services/Items**
- Gross Profit**
- Financial Charges**
- Total Cost of Sales**
- Net Profit After Taxes**
- Net Cash Accruals**

□ **Annexure 3 :: Assessment of Working Capital requirements**

- **Current Assets**
- **Gross Working Capital**
- **Current Liabilities**
- **Net Working Capital**
- **Working Note for Calculation of Work-in-process**

□ **Annexure 4 :: Sources and Disposition of Funds**

□ Annexure 5 :: Projected Balance Sheets

- ROI (Average of Fixed Assets)
- RONW (Average of Share Capital)
- ROI (Average of Total Assets)

□ Annexure 6 :: Profitability Ratios

- D.S.C.R
- Earnings Per Share (EPS)
- Debt Equity Ratio

□ Annexure 7 :: Break-Even Analysis

- Variable Cost & Expenses
- Semi-Variable/Semi-Fixed Expenses
- Profit Volume Ratio (PVR)
- Fixed Expenses / Cost
- B.E.P

□ Annexure 8 to 11 :: Sensitivity Analysis-Price/Volume

- Resultant N.P.B.T
- Resultant D.S.C.R
- Resultant PV Ratio
- Resultant DER
- Resultant ROI
- Resultant BEP

□ Annexure 12 :: Shareholding Pattern and Stake Status

- Equity Capital**
- Preference Share Capital**

□ Annexure 13 :: Quantitative Details-Output/Sales/Stocks

- Determined Capacity P.A of Products/Services**
- Achievable Efficiency/Yield % of Products/Services/Items**
- Net Usable Load/Capacity of Products/Services/Items**
- Expected Sales/ Revenue/ Income of Products/ Services/ Items**

- Annexure 14 :: Product wise Domestic Sales Realisation**
- Annexure 15 :: Total Raw Material Cost**
- Annexure 16 :: Raw Material Cost per unit**
- Annexure 17 :: Total Lab & ETP Chemical Cost**
- Annexure 18 :: Consumables, Store etc.**
- Annexure 19 :: Packing Material Cost**
- Annexure 20 :: Packing Material Cost Per Unit**

- Annexure 21 :: Employees Expenses**
- Annexure 22 :: Fuel Expenses**
- Annexure 23 :: Power/Electricity Expenses**
- Annexure 24 :: Royalty & Other Charges**
- Annexure 25 :: Repairs & Maintenance Expenses**
- Annexure 26 :: Other Manufacturing Expenses**
- Annexure 27 :: Administration Expenses**
- Annexure 28 :: Selling Expenses**

- Annexure 29 :: Depreciation Charges – as per Books (Total)**
- Annexure 30 :: Depreciation Charges – as per Books (P & M)**
- Annexure 31 :: Depreciation Charges - as per IT Act WDV (Total)**
- Annexure 32 :: Depreciation Charges - as per IT Act WDV(P & M)**
- Annexure 33 :: Interest and Repayment - Term Loans**
- Annexure 34 :: Tax on Profits**
- Annexure 35 :: Projected Pay-Back Period and IRR**

Reasons for Buying our Report:

- ❖ **This report helps you to identify a profitable project for investing or diversifying into by throwing light to crucial areas like industry size, market potential of the product and reasons for investing in the product**
- ❖ **This report provides vital information on the product like it's characteristics and segmentation**
- ❖ **This report helps you market and place the product correctly by identifying the target customer group of the product**

- ❖ **This report helps you understand the viability of the project by disclosing details like machinery required, project costs and snapshot of other project financials**
- ❖ **The report provides a glimpse of government regulations applicable on the industry**
- ❖ **The report provides forecasts of key parameters which helps anticipate the industry performance and make sound business decisions**

Our Approach:

- **Our research reports broadly cover Indian markets, present analysis, outlook and forecast for a period of five years.**
- **The market forecasts are developed on the basis of secondary research and are cross-validated through interactions with the industry players**
- **We use reliable sources of information and databases. And information from such sources is processed by us and included in the report**

Scope of the Report

The report titled “Market Survey cum Detailed Techno Economic Feasibility Report on Chocolate Confectionery (Milk Chocolate, Dark Chocolate, White Chocolate, Orange & Tangy Flavour Toffee, Citric Flavoured Candies & Chocolate Wafers).” provides an insight into Chocolate Confectionery Plant (Milk Chocolate, Dark Chocolate, White Chocolate, Orange & Tangy Flavour Toffee, Citric Flavoured Candies & Chocolate Wafers) market in India with focus on uses and applications, Manufacturing Process, Process Flow Sheets, Plant Layout and Project Financials of Chocolate Confectionery Plant (Milk Chocolate, Dark Chocolate, White Chocolate, Orange & Tangy Flavour Toffee, Citric Flavoured Candies & Chocolate Wafers) project. The report assesses the market sizing and growth of the Indian Chocolate Confectionery Plant (Milk Chocolate, Dark Chocolate, White Chocolate, Orange & Tangy Flavour Toffee, Citric Flavoured Candies & Chocolate Wafers) Industry. While expanding a current business or while venturing into new business, entrepreneurs are often faced with the dilemma of zeroing in on a suitable product/line. And before diversifying/venturing into any product, they wish to study the following aspects of the identified product:

- **Good Present/Future Demand**
- **Export-Import Market Potential**
- **Raw Material & Manpower Availability**
- **Project Costs and Payback Period**

We at NPCCS, through our reliable expertise in the project consultancy and market research field, have demystified the situation by putting forward the emerging business opportunity in the Chocolate Confectionery Plant (Milk Chocolate, Dark Chocolate, White Chocolate, Orange & Tangy Flavour Toffee, Citric Flavoured Candies & Chocolate Wafers) sector in India along with its business prospects. Through this report we have identified Chocolate Confectionery Plant (Milk Chocolate, Dark Chocolate, White Chocolate, Orange & Tangy Flavour Toffee, Citric Flavoured Candies & Chocolate Wafers) project as a lucrative investment avenue.

Niir Project Consultancy Services (NPCS)
can provide Detailed Project Report on
Chocolate Confectionery Plant (Milk
Chocolate, Dark Chocolate, White
Chocolate, Orange & Tangy Flavour
Toffee, Citric Flavoured Candies &
Chocolate Wafers)

See more

Project Reports & Profiles

BOOKS

Market Research Report

Visit us at

www.entrepreneurindia.co

www.niir.org

**Take a look at
Niir Project Consultancy Services
on #Street View**

<https://goo.gl/VstWkd>

**Locate us on
Google Maps**

<https://goo.gl/maps/BKkUtg9gevT2>

OUR CLIENTS

Our inexhaustible Client list includes public-sector companies, Corporate Houses, Government undertaking, individual entrepreneurs, NRI, Foreign investors, non-profit organizations and educational institutions from all parts of the World. The list is just a glimpse of our esteemed & satisfied Clients.

Click here to take a look

<https://goo.gl/G3ICjV>



Select and Choose the Right Business Startup for You (Instant Online Project Identification and Selection)

Finding the right startup business is one of the most popular subject today. Starting a business is no easy endeavor, but the time, effort, and challenges can be worth it if you succeed. To give yourself the best chance to be successful, take your time to carefully find the right business for you. We, at NPCS, endeavor to make business selection a simple and convenient step for any entrepreneur/startup. Our expert team, by capitalizing on its dexterity and decade's long experience in the field, has created a list of profitable ventures for entrepreneurs who wish to diversify or venture. The list so mentioned is updated regularly to give you a regular dose of new emerging opportunities.

Visit: <https://www.entrepreneurindia.co/project-identification>

Download Complete List of Project Reports:

Detailed Project Reports

Visit:- <https://www.entrepreneurindia.co/complete-project-list>

NPCS is manned by engineers, planners, specialists, financial experts, economic analysts and design specialists with extensive experience in the related industries.

Our Market Survey cum Detailed Techno Economic Feasibility Report provides an insight of market in India. The report assesses the market sizing and growth of the Industry. While expanding a current business or while venturing into new business, entrepreneurs are often faced with the dilemma of zeroing in on a suitable product/line.

And before diversifying/venturing into any product, they wish to study the following aspects of the identified product:

- ❑ Good Present/Future Demand**
- ❑ Export-Import Market Potential**
- ❑ Raw Material & Manpower Availability**
- ❑ Project Costs and Payback Period**

The detailed project report covers all aspect of business, from analyzing the market, confirming availability of various necessities such as Manufacturing Plant, Detailed Project Report, Profile, Business Plan, Industry Trends, Market Research, Survey, Manufacturing Process, Machinery, Raw Materials, Feasibility Study, Investment Opportunities, Cost and Revenue, Plant Economics, Production Schedule,

Working Capital Requirement, uses and applications, Plant Layout, Project Financials, Process Flow Sheet, Cost of Project, Projected Balance Sheets, Profitability Ratios, Break Even Analysis. The DPR (Detailed Project Report) is formulated by highly accomplished and experienced consultants and the market research and analysis are supported by a panel of experts and digitalized data bank.

We at NPCS, through our reliable expertise in the project consultancy and market research field, have demystified the situation by putting forward the emerging business opportunity in India along with its business prospects.....[Read more](#)



Contact us

NIIR PROJECT CONSULTANCY SERVICES

**106-E, Kamla Nagar, Opp. Mall ST,
New Delhi-110007, India.**

Email: npcs.ei@gmail.com , info@entrepreneurindia.co

Tel: +91-11-23843955, 23845654, 23845886

Mobile: +91-9097075054, 8800733955

Fax: +91-11-23845886

Website : www.entrepreneurindia.co , www.niir.org

Take a look at *NIIR PROJECT CONSULTANCY SERVICES* on #StreetView

<https://goo.gl/VstWkd>



NIIR PROJECT CONSULTANCY SERVICES

AN ISO 9001: 2015 CERTIFIED COMPANY

Who are we?

- **One of the leading reliable names in industrial world for providing the most comprehensive technical consulting services**
- **We adopt a systematic approach to provide the strong fundamental support needed for the effective delivery of services to our Clients' in India & abroad**



We at NPCS want to grow with you by providing solutions scale to suit your new operations and help you reduce risk and give a high return on application investments. We have successfully achieved top-notch quality standards with a high level of customer appreciation resulting in long lasting relation and large amount of referral work through technological breakthrough and innovative concepts. A large number of our Indian, Overseas and NRI Clients have appreciated our expertise for excellence which speaks volumes about our commitment and dedication to every client's success.

We bring deep, functional expertise, but are known for our holistic perspective: we capture value across boundaries and between the silos of any organization. We have proven a multiplier effect from optimizing the sum of the parts, not just the individual pieces. We actively encourage a culture of innovation, which facilitates the development of new technologies and ensures a high quality product.

- **Project Identification**
- **Detailed Project Reports/Pre-feasibility Reports**
- **Market Research Reports**
- **Business Plan**
- **Technology Books and Directory**
- **Industry Trend**
- **Databases on CD-ROM**
- **Laboratory Testing Services**
- **Turnkey Project Consultancy/Solutions**
- **Entrepreneur India (An Industrial Monthly Journal)**

- We have two decades long experience in project consultancy and market research field
- We empower our customers with the prerequisite know-how to take sound business decisions
- We help catalyze business growth by providing distinctive and profound market analysis
- We serve a wide array of customers , from individual entrepreneurs to Corporations and Foreign Investors
- We use authentic & reliable sources to ensure business precision

Our Approach

Requirement collection

Thorough analysis of the project

Economic feasibility study of the Project

Market potential survey/research

Report Compilation

Who do we Serve?

- ❖ **Public-sector Companies**
- ❖ **Corporates**
- ❖ **Government Undertakings**
- ❖ **Individual Entrepreneurs**
- ❖ **NRI's**
- ❖ **Foreign Investors**
- ❖ **Non-profit Organizations, NBFC's**
- ❖ **Educational Institutions**
- ❖ **Embassies & Consulates**
- ❖ **Consultancies**
- ❖ **Industry / trade associations**

Sectors We Cover

- ❖ **Ayurvedic And Herbal Medicines, Herbal Cosmetics**
- ❖ **Alcoholic And Non Alcoholic Beverages, Drinks**
- ❖ **Adhesives, Industrial Adhesive, Sealants, Glues, Gum & Resin**
- ❖ **Activated Carbon & Activated Charcoal**
- ❖ **Aluminium And Aluminium Extrusion Profiles & Sections,**
- ❖ **Bio-fertilizers And Biotechnology**
- ❖ **Breakfast Snacks And Cereal Food**
- ❖ **Bicycle Tyres & Tubes, Bicycle Parts, Bicycle Assembling**

Sectors We Cover *Cont...*

Sectors We Cover *Cont...*

- ❖ **Bamboo And Cane Based Projects**
- ❖ **Building Materials And Construction Projects**
- ❖ **Biodegradable & Bioplastic Based Projects**
- ❖ **Chemicals (Organic And Inorganic)**
- ❖ **Confectionery, Bakery/Baking And Other Food**
- ❖ **Cereal Processing**
- ❖ **Coconut And Coconut Based Products**
- ❖ **Cold Storage For Fruits & Vegetables**
- ❖ **Coal & Coal Byproduct**

- ❖ **Copper & Copper Based Projects**
- ❖ **Dairy/Milk Processing**
- ❖ **Disinfectants, Pesticides, Insecticides, Mosquito Repellents,**
- ❖ **Electrical, Electronic And Computer based Projects**
- ❖ **Essential Oils, Oils & Fats And Allied**
- ❖ **Engineering Goods**
- ❖ **Fibre Glass & Float Glass**
- ❖ **Fast Moving Consumer Goods**
- ❖ **Food, Bakery, Agro Processing**

- ❖ **Fruits & Vegetables Processing**
- ❖ **Ferro Alloys Based Projects**
- ❖ **Fertilizers & Biofertilizers**
- ❖ **Ginger & Ginger Based Projects**
- ❖ **Herbs And Medicinal Cultivation And Jatropha (Biofuel)**
- ❖ **Hotel & Hospitality Projects**
- ❖ **Hospital Based Projects**
- ❖ **Herbal Based Projects**
- ❖ **Inks, Stationery And Export Industries**

- ❖ **Infrastructure Projects**
- ❖ **Jute & Jute Based Products**
- ❖ **Leather And Leather Based Projects**
- ❖ **Leisure & Entertainment Based Projects**
- ❖ **Livestock Farming Of Birds & Animals**
- ❖ **Minerals And Minerals**
- ❖ **Maize Processing(Wet Milling) & Maize Based Projects**
- ❖ **Medical Plastics, Disposables Plastic Syringe, Blood Bags**
- ❖ **Organic Farming, Neem Products Etc.**

Sectors We Cover *Cont...*

Sectors We Cover *Cont...*

- ❖ **Paints, Pigments, Varnish & Lacquer**
- ❖ **Paper And Paper Board, Paper Recycling Projects**
- ❖ **Printing Inks**
- ❖ **Packaging Based Projects**
- ❖ **Perfumes, Cosmetics And Flavours**
- ❖ **Power Generation Based Projects & Renewable Energy Based Projects**
- ❖ **Pharmaceuticals And Drugs**
- ❖ **Plantations, Farming And Cultivations**
- ❖ **Plastic Film, Plastic Waste And Plastic Compounds**
- ❖ **Plastic, PVC, PET, HDPE, LDPE Etc.**

Sectors We Cover *Cont...*

Sectors We Cover *Cont...*

- ❖ **Potato And Potato Based Projects**
- ❖ **Printing And Packaging**
- ❖ **Real Estate, Leisure And Hospitality**
- ❖ **Rubber And Rubber Products**
- ❖ **Soaps And Detergents**
- ❖ **Stationary Products**
- ❖ **Spices And Snacks Food**
- ❖ **Steel & Steel Products**
- ❖ **Textile Auxiliary And Chemicals**

Sectors We Cover *Cont...*

Sectors We Cover *Cont...*

- ❖ **Township & Residential Complex**
- ❖ **Textiles And Readymade Garments**
- ❖ **Waste Management & Recycling**
- ❖ **Wood & Wood Products**
- ❖ **Water Industry(Packaged Drinking Water & Mineral Water)**
- ❖ **Wire & Cable**

Market Research Report



Objective

- To get a detailed scenario of the industry along with its structure and classification
- To provide a comprehensive analysis of the industry by covering aspects like:
 - ❑ Growth drivers of the industry
 - ❑ Latest market trends
 - ❑ Insights on regulatory framework
 - ❑ SWOT Analysis
 - ❑ Demand-Supply Situation
 - ❑ Foreign Trade
 - ❑ Porters 5 Forces Analysis

Objective

- To provide forecasts of key parameters which helps to anticipate the industry performance
- To help chart growth trajectory of a business by detailing the factors that affect the industry growth
- To help an entrepreneur/manager in keeping abreast with the changes in the industry
- To evaluate the competitive landscape of the industry by detailing:
 - ❑ Key players with their market shares
 - ❑ Financial comparison of present players

Clientele

- Venturist/Capitalists
- Entrepreneur/Companies
- Industry Researchers
- Investment Funds
- Foreign Investors, NRI's
- Project Consultants/Chartered Accountants
- Banks
- Corporates

[Click here for list](#)

Data Sources



Scope & Coverage



Our Team

- Our research team comprises of experts from various financial fields:**
- MBA's**
- Industry Researchers**
- Financial Planners**
- Research veterans with decades of experience**

Structure of the Report

STRUCTURE OF THE REPORT

- 1. Overview**
- 2. Market Analysis**
 - 2.1 Growth Drivers**
 - 2.2 Emerging Trends in the Industry**
 - 2.3 Regulatory Framework**
 - 2.4 SWOT Analysis**
 - 2.5 Herfindahl–Hirschman Index (HHI)**
- 3. Market Forecasts**
- 4. Key Players**

Structure of the Report

Structure of the Report

5. Key Financials and Analysis

5.1 Contact Information

5.2 Key Financials

5.3 Financial comparison

6. Industry Size & Outlook



Take a look at *Niir PROJECT CONSULTANCY SERVICES*
on #Street View

<https://goo.gl/VstWkd>





Contact us

NIIR PROJECT CONSULTANCY SERVICES

106-E, Kamla Nagar, Opp. Mall ST,

New Delhi-110007, India.

Email: npcs.ei@gmail.com , info@entrepreneurindia.co

Tel: +91-11-23843955, 23845654, 23845886

Mobile: +91-9097075054, 8800733955

Fax: +91-11-23845886

Website : www.entrepreneurindia.co , www.niir.org

Take a look at *NIIR PROJECT CONSULTANCY SERVICES* on #StreetView

<https://goo.gl/VstWkd>

Follow us

FOllow us



➤ <https://www.linkedin.com/company/niir-project-consultancy-services>



➤ <https://www.facebook.com/NIIR.ORG>



➤ <https://www.youtube.com/user/NIIRproject>



➤ https://twitter.com/npcs_in



➤ <https://www.pinterest.com/npcsindia/>

A large orange banner with the words 'THANK YOU' written in white, bold, sans-serif capital letters. The banner is held up by two stylized hands, one on the left and one on the right, against a light blue background.

THANK
YOU

For more information, visit us at:

www.niir.org

www.entrepreneurindia.co